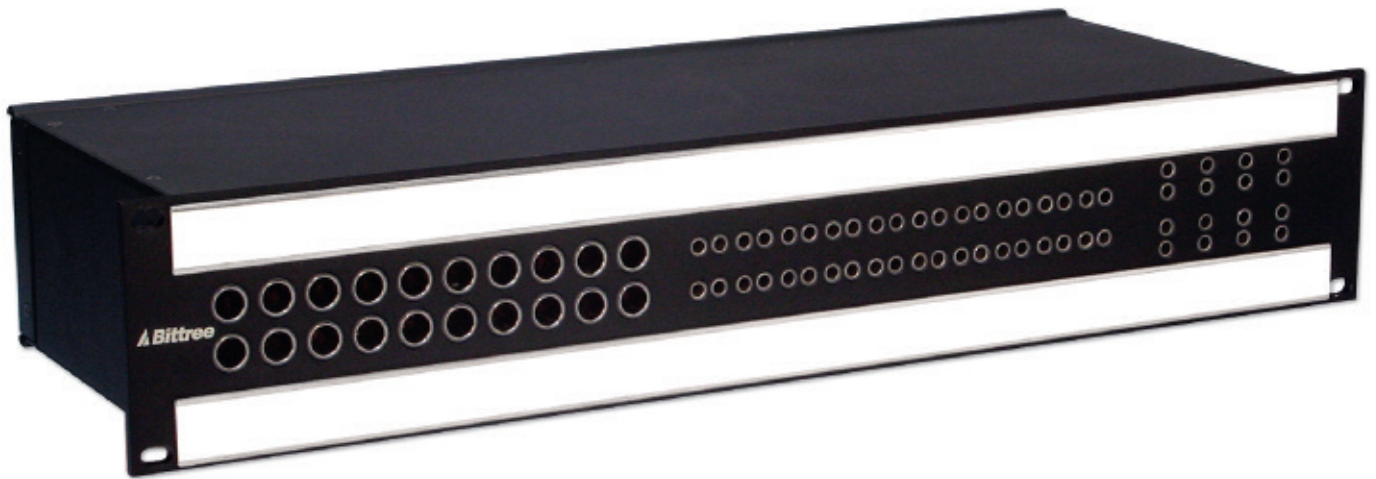


INTEGRATED

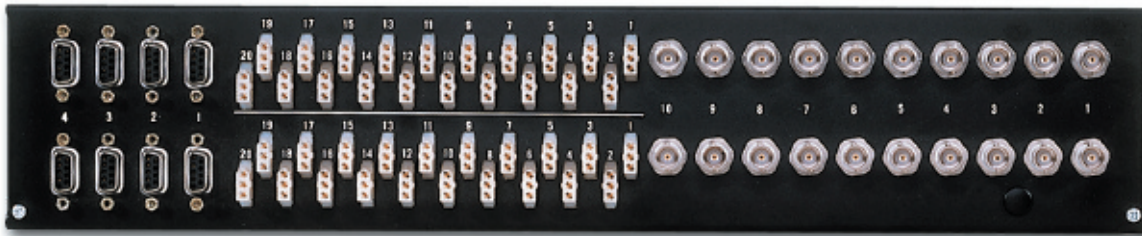


Overview

The revolutionary idea behind Bittree's Integrated Patchbays is to combine the three main patching requirements – audio, video and data – into a single integrated unit.

Our Integrated patchbays therefore have the same professional quality and finish as the rest of our line, avoiding the loose pieces and sloppy look of modular patchbays offered by other companies.

Integrated patchbays are ideal for environments such as edit rooms and professional home studios that have multiple types of patching requirements (i.e., audio, video and data), but that have a minimal number of patching requirements. They are a cost-effective way to have the convenience, functionality and reliability of a multiple-patch system, without having to purchase three separate patchbays.



INTEGRATED PATCHBAY FEATURES: VIDEO

- High-bandwidth performance for SD/SDI, HD/SDI, and 3 Gb/s applications available
- Jacks conform to SMPTE 292M and SMPTE 424M
- Available in both Mini-WECO and WECO formats
- BNC rear interface
- True 75ohm impedance with low return loss
- Jacks are isolated from the panel
- Jacks may be ordered in four different configurations:
 - o Dual self-normaling, terminating (2MWTHTD)
 - o Dual self-normaling, non-terminating (2MWNHND)
 - o Single non-normaling, terminating (1MWTHTD)
 - o Single non-normaling, non-terminating (1MWNHND)

INTEGRATED PATCHBAY FEATURES: DATA

- Handles bi-directional signals such as SMPTE 207M RS-422, RS-232 and other general purpose interface applications
- Robust six-wire circuits accommodate RS422 signals – and provide two extra circuits for additional applications and protocols
- Jacks rated to 30,000 minimum insertion cycles
- Precision-stamped reinforced steel jack frame
- Available as normaled or non-normaled
- D9 female rear interface

INTEGRATED PATCHBAY FEATURES: AUDIO

- Bantam (TT) or Long Frame (1/4”) Audio
- Jacks rated to 30,000 minimum insertion cycles
- Copper-nickel-silver alloy leaf springs with gold-plated cross bar switching contacts and nickel-plated sleeve bushings
- Precision-stamped reinforced steel jack frame
- Gold-plated contacts used in E3 rear interface
- Wired with low-capacitance, AES/EBU-rated, shielded, twisted pair
- Available in full normal, half-normal or non-normal
- Mating audio connectors and contacts are included

INTEGRATED PATCHBAY FEATURES: PANEL

- Available in 1.5 or 2 rack units (RU)
- Panels made from 3/16” solid aluminum with a durable powder-coat finish
- 12” or 7” deep chassis
- Black or gray front panel
- Large user-friendly designation strips

HB VIDEO
E-SERIES VIDEO
COMP. VIDEO
AES AUDIO
AUDIO TT
AUDIO 1/4"
AUDIO ACTIVE
RS-422 PROG.
INTEGRATED
ACCESSORIES

DESCRIPTION	PRODUCT NUMBER
Bantam (TT) Audio, 12" Deep Chassis, Mono Spacing	
Video 2x12 (1WN); Audio 2x24 (NNNIT/E3)	BIPS-73
Video 2x12 (2WN); Audio 2x24 (FNLIT/E3)	BIPS-54
Video 2x12 (2WT); Audio 2x24 (FNLBT/E3)	BIPS-67
Video 2x12 (2WT); Audio 2x24 (FNLBT/E3)	BIPS-109
Video 2x12 (2WT); Audio 2x24 (FNLIT/E3)	BIPS-71
Video 2x16 (2MWT); Audio 2x16 (FNLIT); Data 2x4 (FI6)	BIPS-142
Video 2x16 (2MWT); Audio 2x16 (HNLIT); Data 2x4 (FI6)	BIPS-156
Bantam (TT) Audio, 12" Deep Full Chassis, Stereo Spacing	
Video 2x10 (1WN); Audio 2x20 (FNLIT/E3); Data 2x4 (NNT)	BIPS-90
Video 2x10 (1WN); Audio 2x20 (NNNIT/E3); Data 2x4 (NNT)	BIPS-1
Video 2x10 (1WT); Audio 2x20 (FNLIT/E3); Data 2x4 (N4T)	BIPS-149
Video 2x10 (1WT); Audio 2x20 (NNNIT/E3); Data 2x4 (NNT)	BIPS-103
Video 2x10 (2WN); Audio 2x20 (FNLIT/E3); Data 2x4 (N4T)	BIPS-2
Video 2x10 (2WN); Audio 2x20 (HNLBT/E3); Data 2x4 (N4T)	BIPS-91
Video 2x10 (2WN); Audio 2x20 (HNLIT/E3); Data 2x4 (N4T)	BIPS-3
Video 2x10 (2WT); Audio 2x20 (FNLBT/E3); Data 2x4 (N4T)	BIPS-110
Video 2x10 (2WT); Audio 2x20 (FNLBT/E3); Data 2x4 (NNT)	BIPS-65
Video 2x10 (2WT); Audio 2x20 (FNLIT/E3); Data 2x4 (N4T)	BIPS-4
Video 2x10 (2WT); Audio 2x20 (FNLLT/E3); Data 2x4 (N4T)	BIPS-164
Video 2x10 (2WT); Audio 2x20 (HNLBT/E3); Data 2x4 (N4T)	BIPS-174
Video 2x10 (2WT); Audio 2x20 (HNLIT/E3); Data 2x4 (N4T)	BIPS-7
Video 2x12 (2WT); Audio 2x24 (FNLBT/ID)	BIPS-116
Video 2x12 (2WT); Audio 2x24 (FNLLT/E3)	BIPS-112
Bantam (TT) Audio, 7" Deep Full Chassis, Stereo Spacing	
Video 2x10 (2WT); Audio 2x20 (FNLIT/E3); Data 2x4 (N4T)	BIPS-102
Video 2x12 (2WN); Audio 2x24 (FNLIT/E3)	BIPS-5
Video 2x12 (2WN); Audio 2x24 (FNLST/E3)	BIPS-137
Bantam (TT) Audio, 5" Deep Half Chassis, Mono Spacing	
Video 2x12 (2WNHD); Audio 2x24 (FNLIT/E3)	BIPS-128
Video 2x12 (2WTHD); Audio 2x24 (HNLIT/E3)	BIPS-133
Video 2x16 (2MWTHD); Audio 2x24 (FNLIT/E3)	BIPS-74
Video 2x16 (2MWTHD); Audio 2x24 (HNLBT/E3)	BIPS-182
Bantam (TT) Audio, 5" Deep Half Chassis, Stereo Spacing	
Video 2x12 (2WNHD); Audio 2x24 (HNLIT/E3)	BIPS-89
Video 2x12 (2WTHD); Audio 2x12 (FNLIT/E3)	BIPS-51
Video 2x12 (2WTHD); Audio 2x24 (FNLIT/E3)	BIPS-82
Long Frame (1/4") Audio, 5" Deep Half Chassis, Mono Spacing	
Video 2x12 (1WNHD); Audio 2x12 (NNNIT/E3)	BIPS-63
Video 2x12 (2WNHD); Audio 2x12 (FNLIT/E3)	BIPS-55
Video 2x12 (2WNHD); Audio 2x12 (FNLIT/ID)	BIPS-136
Video 2x12 (2WNHD); Audio 2x12 (HNLIT/E3)	BIPS-78
Video 2x12 (2WTHD); Audio 2x12 (FNLIT/E3)	BIPS-165